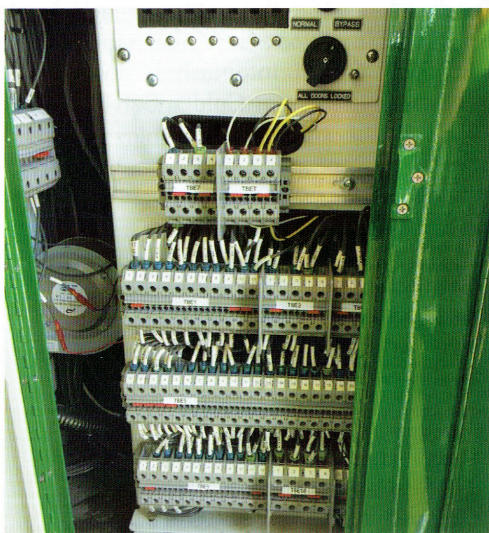




DOOR FRAMES—To achieve current fire resistance standards, the PCCs being rebuilt have metal frames around the windows and a ply-metal door construction. Note the right hand rear-view camera over the doors.



IT'S ALIVE!—The Muni maintenance team, captained by Manny Enriquez (center) connect the battery leads to energize Car 1056 after unloading.



NICE AND NEAT—This restoration contract was focused on optimal maintainability. Wiring is clearly marked and arranged for accessibility, whether here in the dashboard cabinet or under the car.



NEW CAR SMELL—Yep, the interior of 1056 smelled just like it came directly from the showroom.



CENTRAL CONTROLS—The operator's console combines a traditional panel with such modern features as dual rear view cameras at the top of both sides of the windshield.

The transfer cutter is already a relic; after the contract was let, Muni announced it was discontinuing printed transfers.

All photos, Rick Laubscher

STILL TO COME
The wonderful Kansas City Public Service Co. logo, featuring Federic Remington's iconic "Scout" statue, remains to be applied to 1056, along with the car numbers, which this time will be in the proper Railroad Roman font.



FIRST PILOT—Kevin Sheridan, a third-generation Muni man, prepares to pilot 1056 on its first San Francisco trip, around Muni Metro East yard. Kevin and Manny Enriquez had already operated the car recently on Brookville's test track before it headed west.